

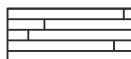
HARDWOOD FLOORING

TECHNICAL DETAILS



Color: Natural

Layout:



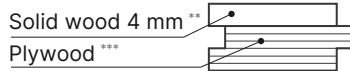
Pattern: XXL Plank

1. PRODUCT INFO

Species	White European Oak
Finish	Silk Oxi
Structure	Engineered (2-layer)
Joint	T&G
Bevel	Micro (0,7 mm)
Surface	Light Brush
Grade	Character
DIMENSIONS	
Thickness	15 mm (5/8")
Width	300 mm (12")
Row Length	3000...6000 mm (10'...20')
Shorts	broken rows occur

2. STRUCTURE

2-layer Engineered Construction *



Solid wood 4 mm **
Plywood ***

* High Balance and Stability
** Saw Cut White European Oak
*** Birch water resistant plywood

3. PACKAGING

BOX	PALLET
1,8 m2 (10,76 ft2)	86,4 m2 (930 ft2)
Dimensions (TWL): depends on order	Dimensions (LWH): depends on order
Weight: 21,6 kg (46,3 lb)	Weight: 1040 kg (2293 lb)

4. FINISH

Sheen \ Gloss	Matte
Look	Semi-open pores, wire brushed
Feeling	Transfer warmth of natural wood
Type	Hardwax oil
Wear resistance	Low
Scratch resistance	Low
Slip resistance	50 (SRV dry)
Resistance to chemical agents	DIN68861 - Class A1 (no water spots)
Maintanance	Easy
Repairability	Easy

5. DESCRIPTION

Name	Character
Color variation	
Knots	
Other	

Character Grade creates an effect of antique wood and emphasizes authentic natural oak texture. Planks may contain diverse color variation, sapwood, unlimited burls, brown streaks, tight knots and properly filled open knots, warm holes as well as other imperfections in the face work (torn grain) to design advantage.

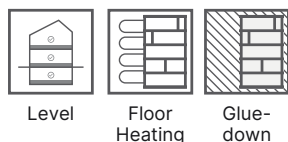
6. TECHNICAL INFORMATION

Characteristics (EN 14342)		Deviations (EN 13489)	
Formaldehyde emission class	E1; ULEF	Deviation on Thickness	+/- 0,2 mm
Pentachlorophenol content	None	Deviation on Width	+/- 0,2 mm
Thermal resistance	0,118 m2 K\W	Height Difference	+/- 0,2 mm
Thermal conductivity	0,161 W\ (m K)	Cup	<0,2% of width
Fire resistance	Dfl-s1	Bow	<0,5% of length
		Spring	<0,1% of length



PRODUCT USE

7. INSTALLATION



Glue down over concrete, plywood or wooden subfloor or nail down over wooden subfloor. Applicable above, on and below ground level. Suitable for underfloor heating.

8. STORAGE & USE

Air Humidity 40-65%	Temperature +18°C ... +22°C (64°F ... 72°F)

9. CARE & MAINTENANCE

Maintenance of hardwood floors with Silk Oxi assumes normal (daily if necessary) cleaning from dust and grit using a vacuum, followed by a thorough cleaning with floor cleaner. Floor surface areas that receive the most traffic and get worn down quicker, such as areas by the front door, hallways, kitchens etc. should be periodically renewed with oil.

10. DESCRIPTIONS & IMAGERY

Flooring colors displayed in digital platforms may vary according to the color settings of the monitor you are using.



ME Decor Group OÜ
Ruunaoja tn 3, 11415, Tallinn, Estonia
VAT EE102590311
E-mail: info@me-decor.com
www.me-floor.com
Inst.: @me_floor_



NO ADDED formaldehyde

